

## Coltelli Knives

**A** Coltello "FB"  
arrotato cm 29  
manico plastificato  
*Shoemaker knife "FB" with  
plastic handle - sharpened*  
cod. COLTFB



**B** Coltello DICK  
art. 3500 cm 27  
*Shoemaker knife  
DICK cm 27*  
cod. COLTD



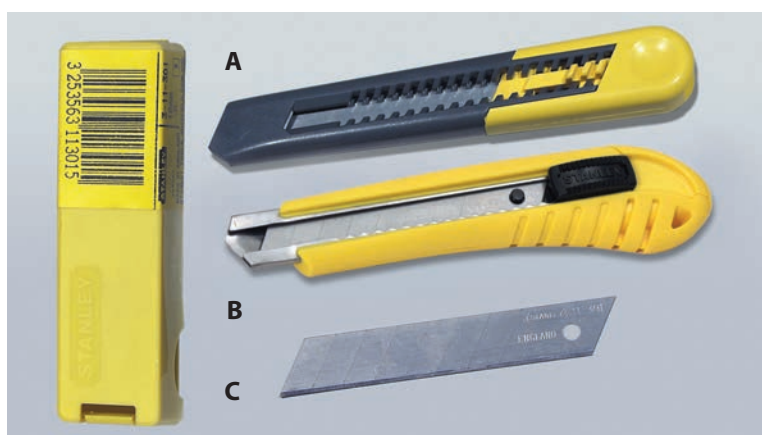
**C** Coltello "FB"  
arrotato cm 29  
Sinistro per mancini  
manico plastificato  
*Shoemaker knife "FB" with  
plastic handle - sharpened  
Left-handed.*  
cod. COLTFBS

## Cutter Stanley

**A** Cutter Stanley art. 10151  
cod. COLTS10151

**B** Cutter Stanley art. 10280  
cod. COLTS10280

**C** Lama ricambio art. 11301  
*Spare blades*  
pz 50  
cod. LAMRIC11301

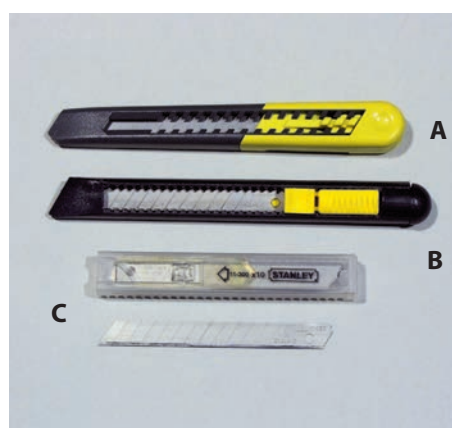


## Cutter Stanley

**A** Cutter Stanley art. 10150  
cod. COLTS10150

**B** Cutter Stanley art. 10160  
cod. COLTS10160

**C** Lama ricambio art. 11300  
*Spare blades*  
pz 10  
cod. LAMRIC11300



# Coltelli-Knives Utensili-Tools



## Cutter Stanley Lame di ricambio

A Cutter Stanley

cod. COLTS10199

B Lame Trapezio

Trapezoid spare blades  
pz 10

cod. LAMRIC11992

C Lame Uncino

Hook spare blades  
pz 10

cod. LAMRIC11995

## Cutter MADISON

Art. 1758

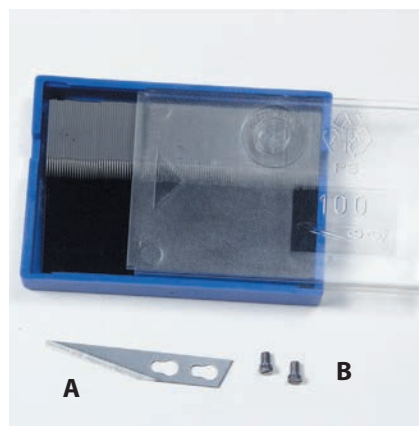
cod. COLTM1758



## Coltello Tagliatore Manico Rosso

Knife with red handle

cod. COLMANR



## Lamette

A Lamette - Manico rosso

Spare blades  
pz 100

cod. LAMRICMR

B Vitine - Manico Rosso

Spare screws

cod. VITRICMR

135



## Coltelli a Mezza Luna

Half Moon knife

cod. COLTML



## Coltello Tagliacinghie

Con guida cm 10

Knife with guide cm 10 to  
cut leather belts

cod. COLGUI



## Coltello a Tazza per Scarnitrice

Knife for skiving machine

cod. COLTTS



## Coltello per Scarnire la Pelle

Knife to skive the leather

cod. COLTSCP